

MAP

of the TOWNSITE of

SIMI

VENTURA CO. CAL.

— Adopted by the Board of Directors of the —

SIMI LAND & WATER

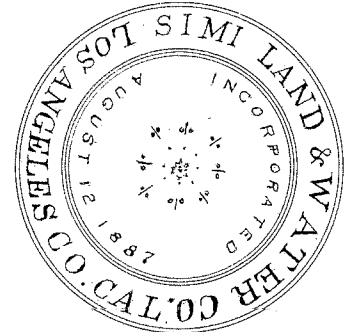
Company

August 11th 1892

H. Gleichman President

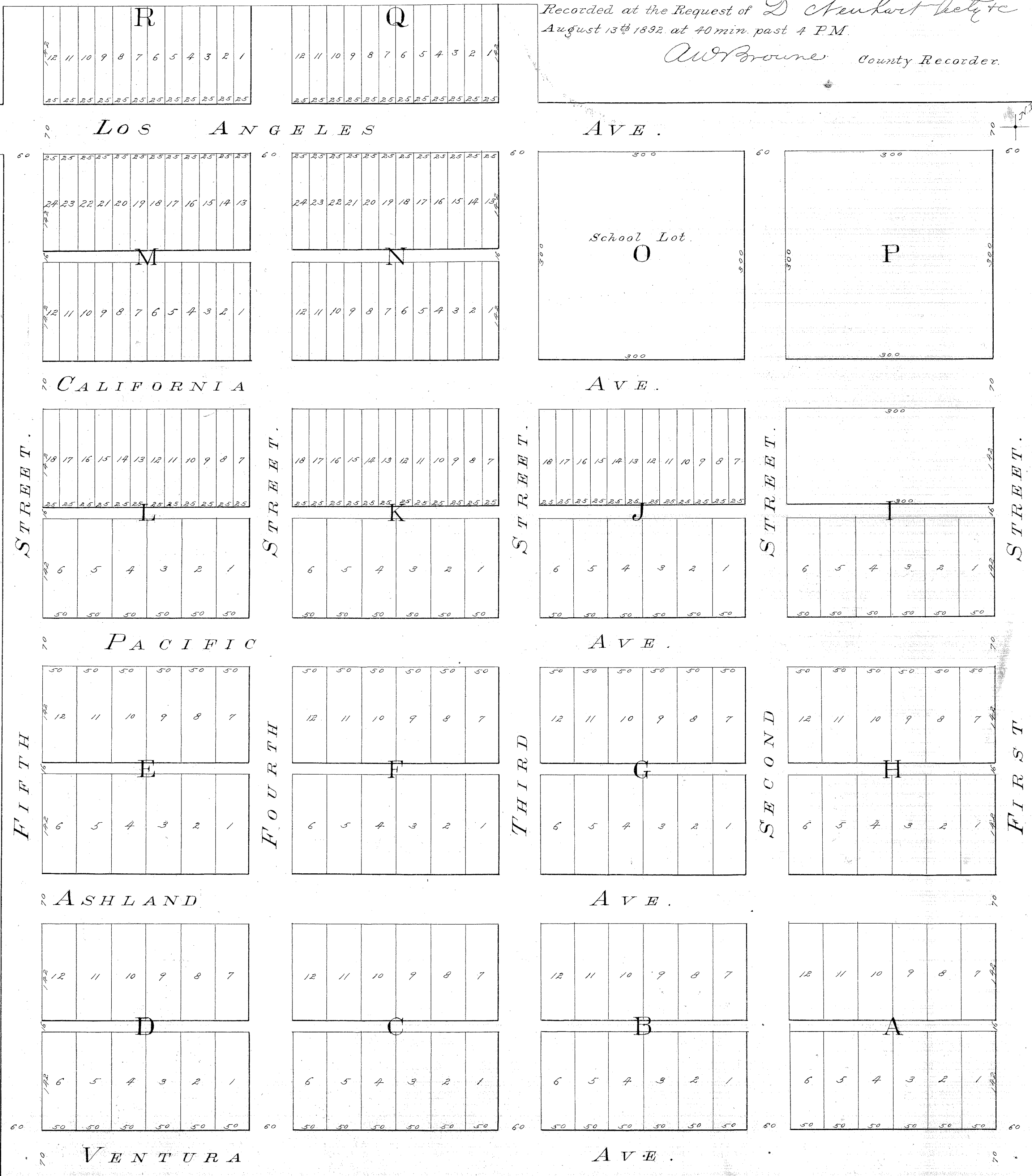
D. Neuhoff Secretary

— Scale 100 feet to 1 inch —



Recorded at the Request of *D. Neuhoff* & *H. Gleichman*
August 13th 1892 at 40 min. past 4 P.M.

W. H. Brown County Recorder.



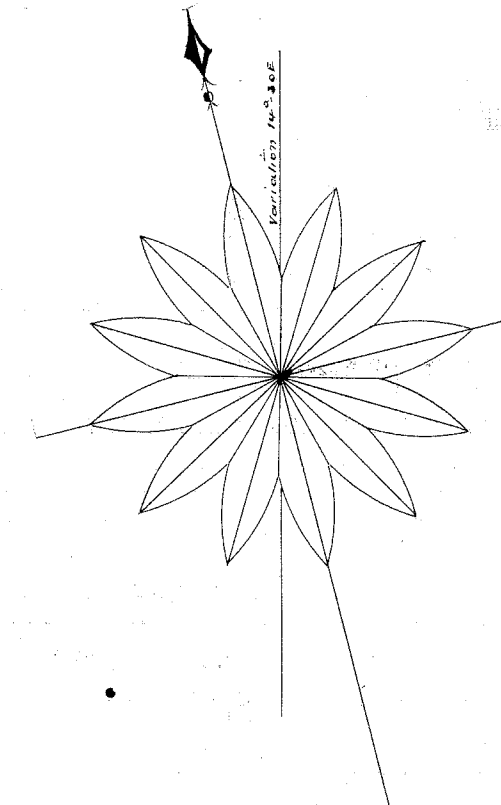
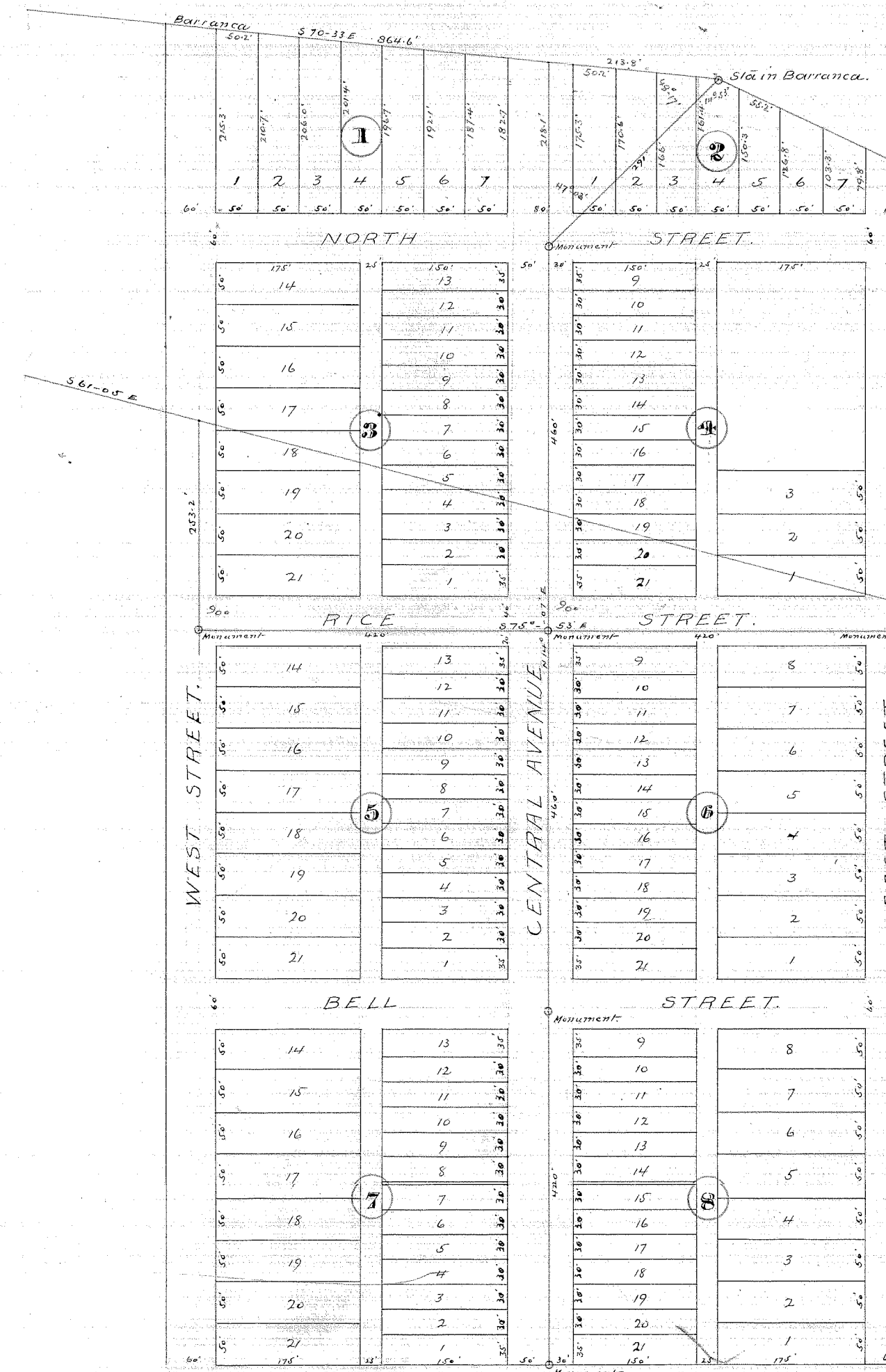
MAP OF THE TOWN OF

Somis

IN

RANCHO LAS POSAS

VENTURA COUNTY CALIFORNIA



Bound north 89° 46' 46\"/>

Scale 160 feet to One Inch.

Surveyed by *M. B. Isham*.

Jan 1892

Plotted by *Geo. C. Power*.

COUNTY SURVEYOR.

Monuments, Concrete with iron center.
Location, 10 feet South & East of center of Street.
Distances are in feet.

Recorded at the request of *Thomas M. Ward*
October 25th 1892 at 40 min past 3 o'clock P.M.
By *W. H. Brown* County Recorder.
By *John S. Wagner* Deputy Recorder.